

DUE Mon. 10/22

NAME \_\_\_\_\_

**HW #4** Unit 2 - 10/18

**Final Score:** \_\_\_/4

**INITIAL TEACHER FEEDBACK:**

- SHOW WORK PLEASE     NEATER PLEASE  
 WRITE TIME SPENT     PLEASE CORRECT

LEVEL 3 \_\_\_\_\_ (√-, √, or √+)

- MISTAKES CORRECTED  No  
INCLUDES REFLECTION  No  
REDO SHOWS WORK Neatly  No  
LATE = -1  If you were absent, write "Absent" here:

**25 Min. Time limit:** This homework took

approximately \_\_\_\_\_ minutes.

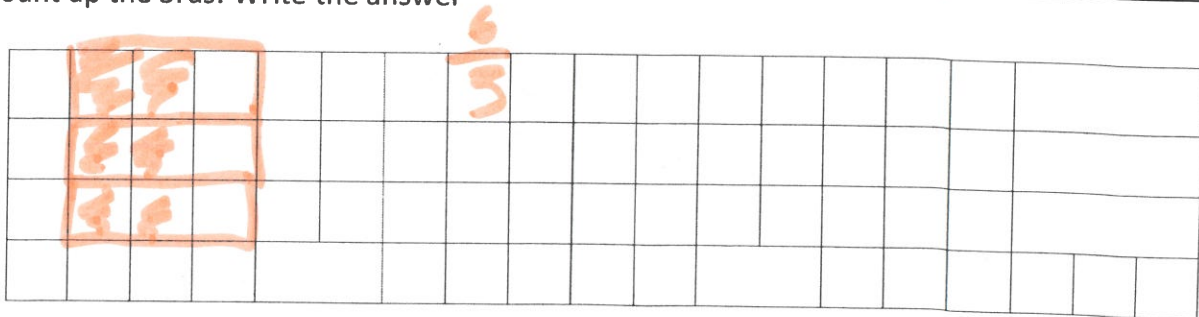
OPTIONAL— Student feedback to teacher:

**LEVEL ONE - Making Meaning**

Improper fraction: **2**

Mixed number: **2**

#1. Draw  $\frac{2}{3}$  multiplied by 3. (Draw  $\frac{2}{3}$  three times) →  
Count up the 3rds. Write the answer



#2 Draw the fourth figure in this series:

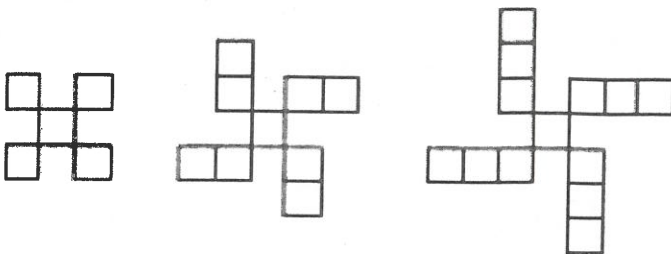
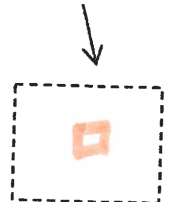


Figure 1      Figure 2      Figure 3

What would "Figure # Zero" look like? Draw it here:



Can you fill in the blanks?

	Figure 1	Figure 2	Figure 3	Figure 4	Figure 5
Number of squares	5	9	13	17	21

## LEVEL 2: Happy Numbers:

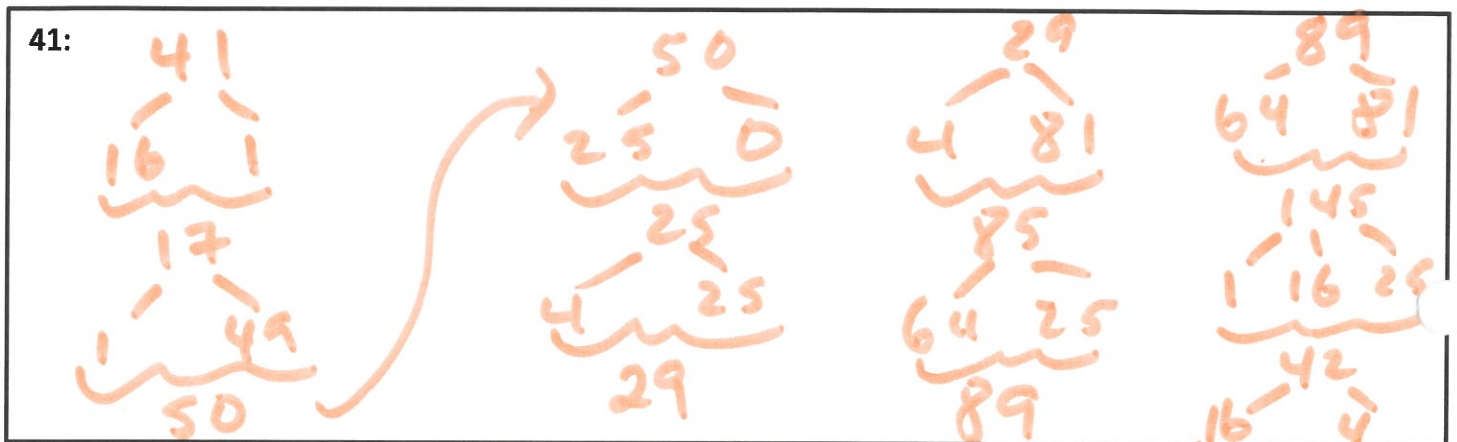
### PROCEDURE:

- 1) Square each DIGIT separately
- 2) Add the results
- 3) Repeat , Keep repeating

### RULE:

- If you end up with a final sum of ONE, the number is happy 😊
- If the sum never reaches one, but instead cycles back to a previous sum, this will be an infinite loop and the number is UNHAPPY ☹️

#3. Is **41** happy or unhappy?



#4.

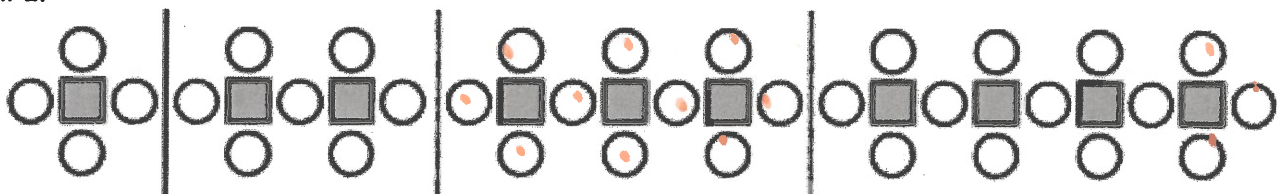


Figure 1

Fig. 2

Fig. 3

Fig 4

$$8 \times 3 + 1$$

Fill in the chart:

	Fig. 1	Fig 2	Fig 3	Fig. 4	Fig 5	...	Fig 8	Fig. 40
# of circles	4	7	10	13	16		25	121
# of squares	1	2	3	4	5		8	40
Total # of circles & squares	5	9	13	17	21		33	161

$$40 \cdot 3 + 1$$

# LEVEL 3: CHALLENGE

## COUNTING LIKE A MAYAN

0 	1 	2 	3 	4 
5 	6 	7 	8 	9 
10 	11 	12 	13 	14 
15 	16 	17 	18 	19 

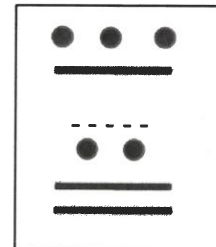
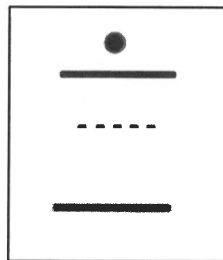
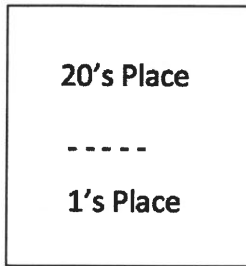
Base – 20 system:

125

6 twenties and 5 ones

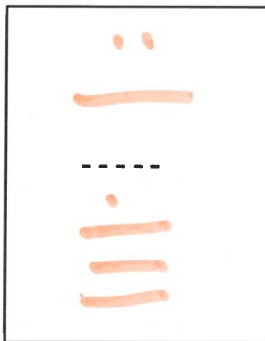
172

8 twenties and 12 ones



### CHALLENGE PROBLEMS

156



171



195



### HOMEWORK CORRECTIONS:


NOTES TO SELF:

---



---



---



---



---

