

5th Grade Puzzle Packet #3

NAME _____

Due Date : _____

Points _____

(Teacher fills out)

Cryptograms: 1.5 points each.

In this coded message, each letter stands for a different letter. For example, in the first one, all the W's are S's, all the A's are N's and all the Y's are T's.

1.

S **N** **T**
LY'W J ZVAAS YMLAF JHNVY

RLZC: LZ SNV Q CZVWC YN

JEECGY JASYMLAF HVY YMC

S
HCWY, SNV DCQ S NZYCA FCY LY.

Extra ½ pt Who said this?

2.

P

E T

NDRNVD LDD OQ DHLDVCDL

SL OQ D EDYODG RJ OQ D

FYPCDGLD SYT XFTAD

DCDGZOQ PYA SL PO

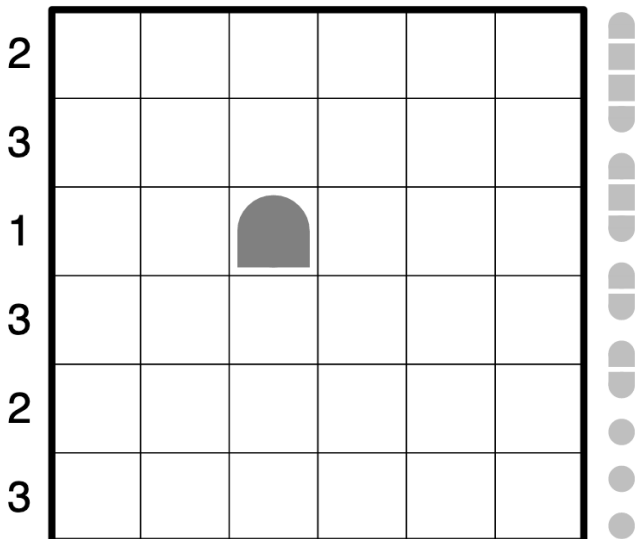
GDVSODL OR OQ DH.

Extra 1/2 pt Who said this

Battleships: 1.5 points each

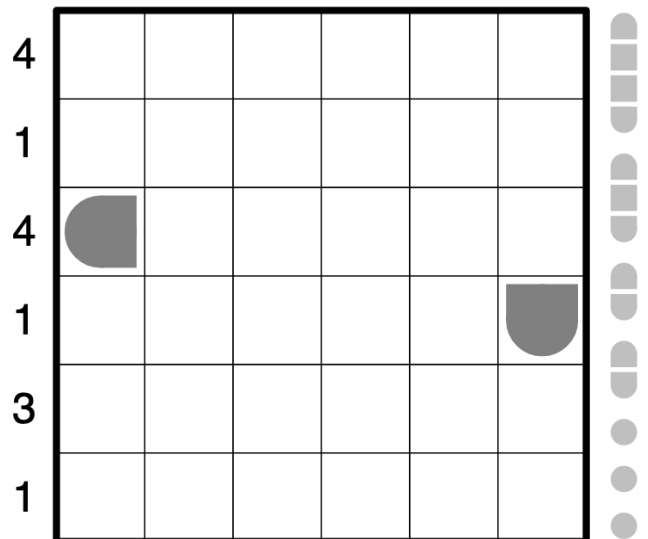
#1

5 0 5 0 1 3

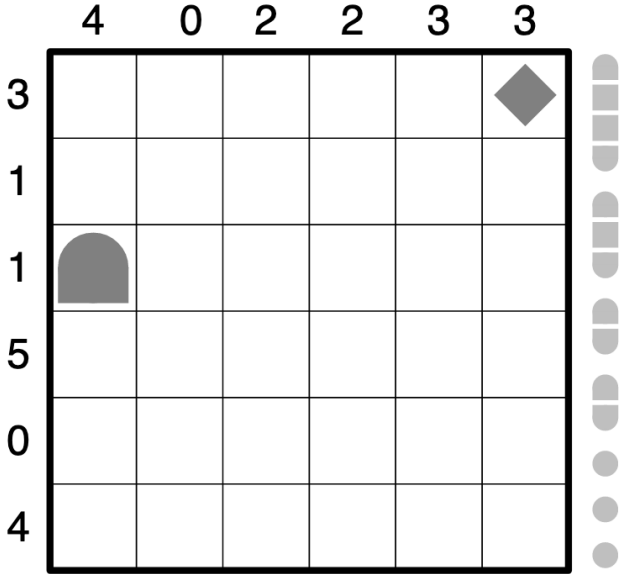


#2

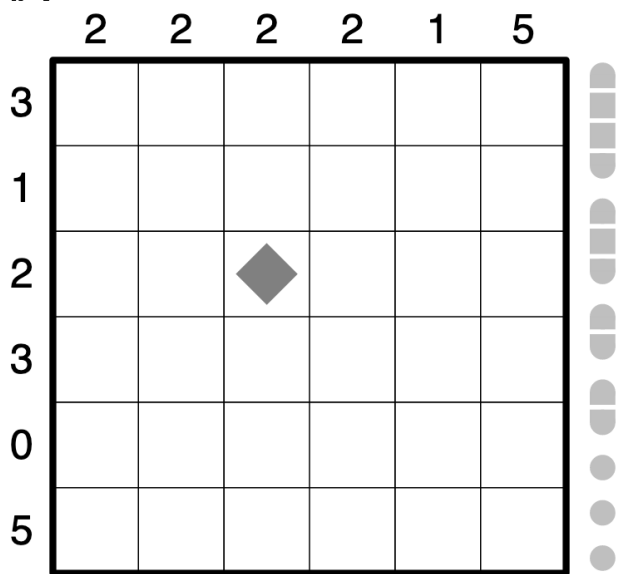
3 1 3 2 0 5



#3



#4



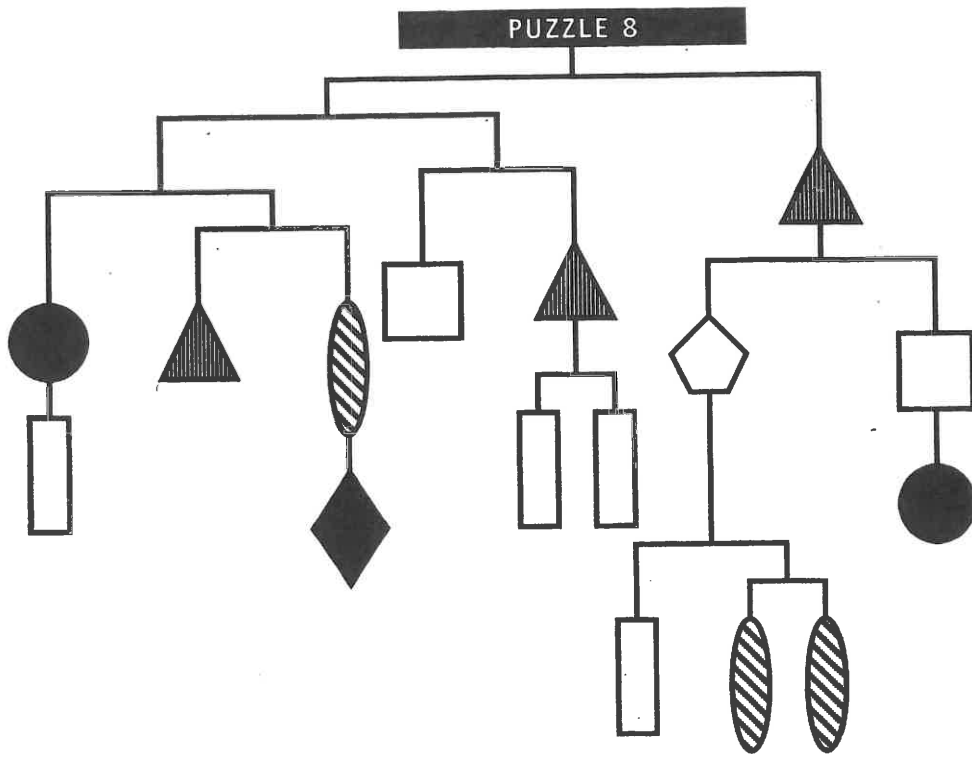
Logic Problem 1.5 points

Posy Poser

Each of the four women in this puzzle received a bunch of flowers from her partner, for no particular reason - isn't romance wonderful?
 What type of flowers were given to each woman and who is her partner?

1. Wanda's partner, Mitch, gave her a huge bouquet of her favorite blooms, which aren't roses.
2. Matthew gave gladioli to his partner (not Wendy).
3. Wynne received a dozen lilies, but not from Mark.

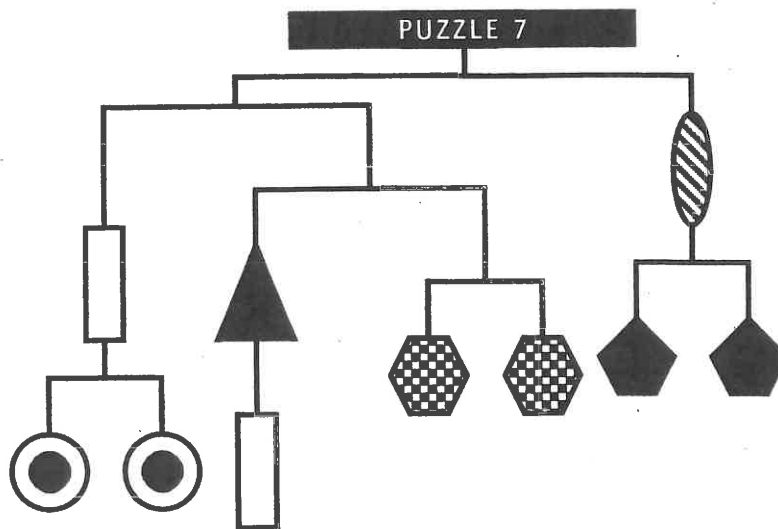
	FLOWERS				PARTNER			
	Asters	Gladioli	Lilies	Roses	Matthew	Mark	Mike	Mitch
Wanda								
Wendy								
Willow								
Wynne								
Matthew								
Mark								
Mike								
Mitch								



Discover the value of each of the shapes.
The total weight is 64. Clue:

$$\text{striped oval} < \text{black diamond}$$

2 pts
each



Discover the value of each of the shapes.
The total weight is 48. Clues:

$$\text{circle with center} > \text{white rectangle} \quad \text{circle with center} + \text{checkered hexagon} < \text{black diamond}$$