

# Pzl Pck # 3 — KEY

## CRYPTOGRAMS — 1½ points each

1.

LY'W J ZVAAS YMLAF JHNVY

RLZC: LZ SNV QCZVWC YN

JEECGY JASYMLAF HVY YMC

HCWY, SNV DCQS NZYCA FCY LY.

IT'S A FUNNY THING ABOUT LIFE. IF YOU REFUSE TO  
ACCEPT ANYTHING BUT THE BEST, YOU VERY OFTEN GET IT.

Extra ½ pt: Who said this? **Goethe**

2.

PNDRNV D LDD

TQQDHL D VCDL SL OQD

EDYODG RJ OQD

FYPCDGLD SYT XFTAD

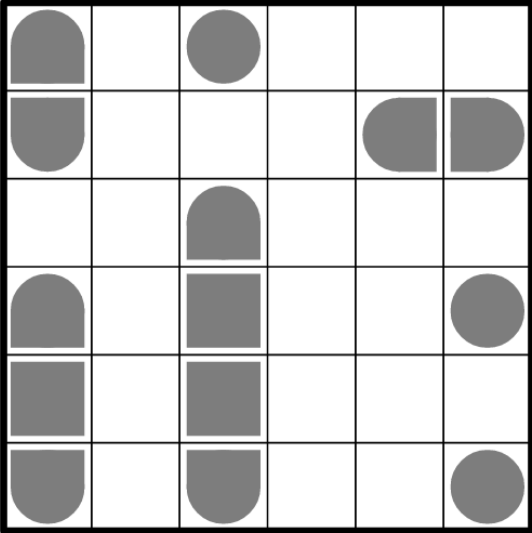
DCDGZOQPYA SL PO

GDVSODL OR OQDH.

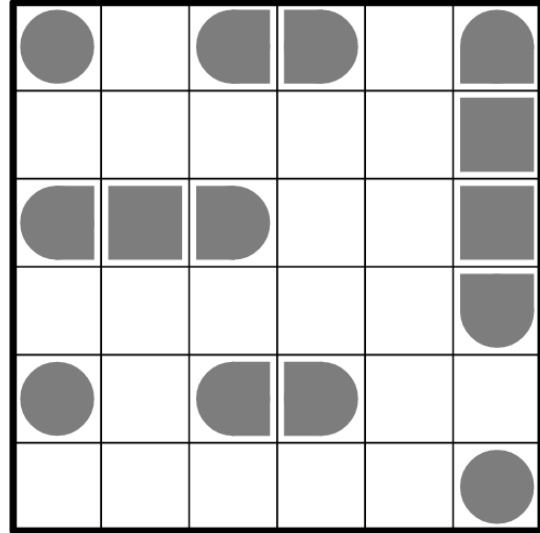
PEOPLE SEE THEMSELVES AS THE CENTER OF THE UNIVERSE AND  
JUDGE EVERYTHING AS IT RELATES TO THEM.

Extra ½ pt: Who said this? **Peace Pilgrim**

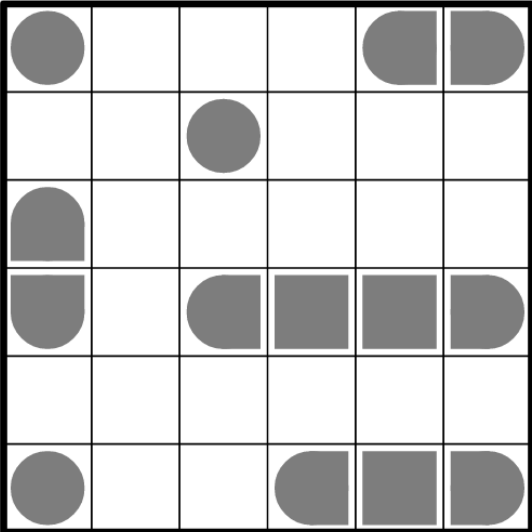
#1



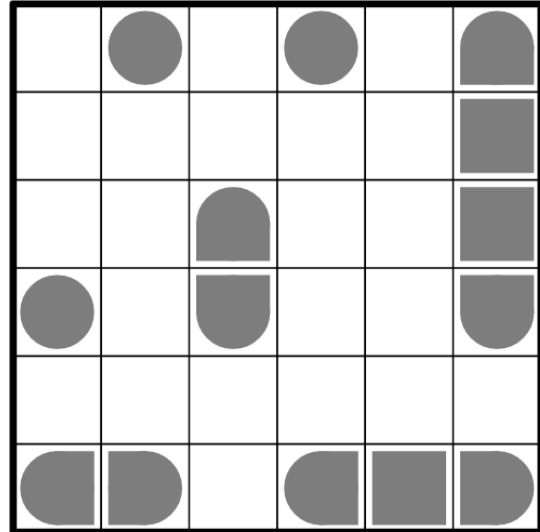
#2



#3



#4

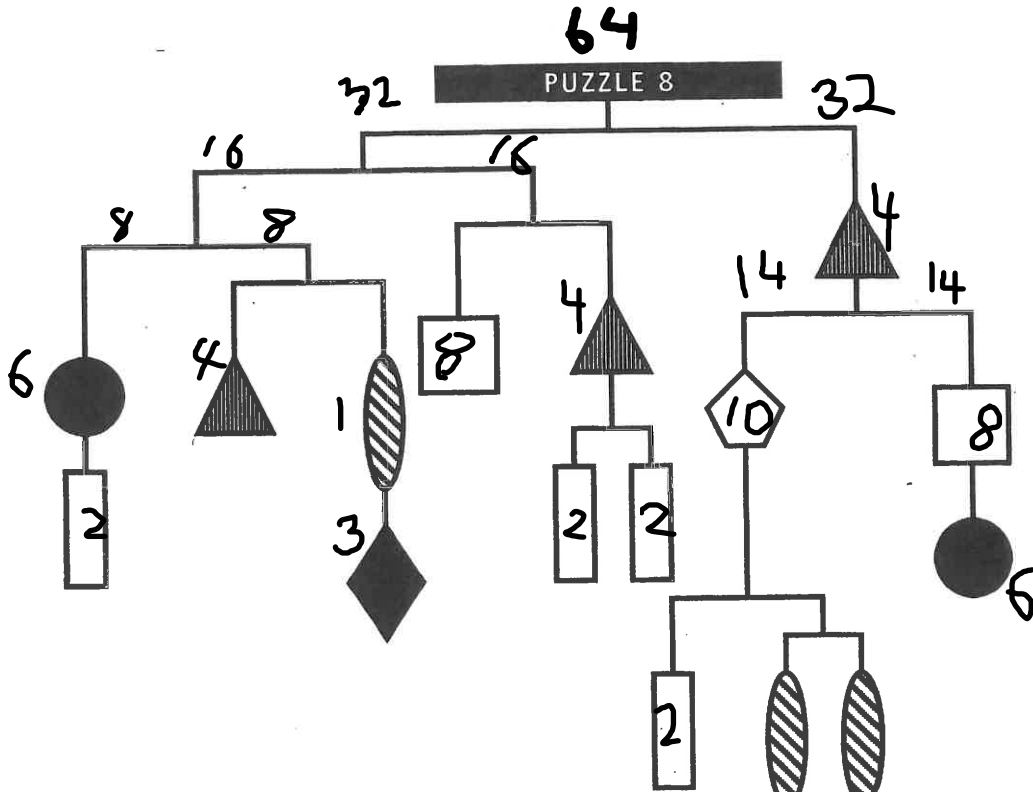


# Posy Poser

Each of the four women in this puzzle received a bunch of flowers from her partner, for no particular reason - isn't romance wonderful?  
 What type of flowers were given to each woman and who is her partner?

1. Wanda's partner, Mitch, gave her a huge bouquet of her favorite blooms, which aren't roses.
2. Matthew gave gladioli to his partner (not Wendy).
3. Wynne received a dozen lilies, but not from Mark.

	FLOWERS				PARTNER			
	Asters	Gladioli	Lilies	Roses	Matthew	Mark	Mike	Mitch
Wanda	0	X	X	X	X	X	X	0
Wendy	X	X	X	0	X	0	X	X
Willow	X	0	X	X	0	X	X	X
Wynne	X	X	0	X	X	X	0	X
Matthew	X	0	X	X				
Mark	0	X	X	X				
Mike	X	X	X	0				
Mitch	X	X	0	X				

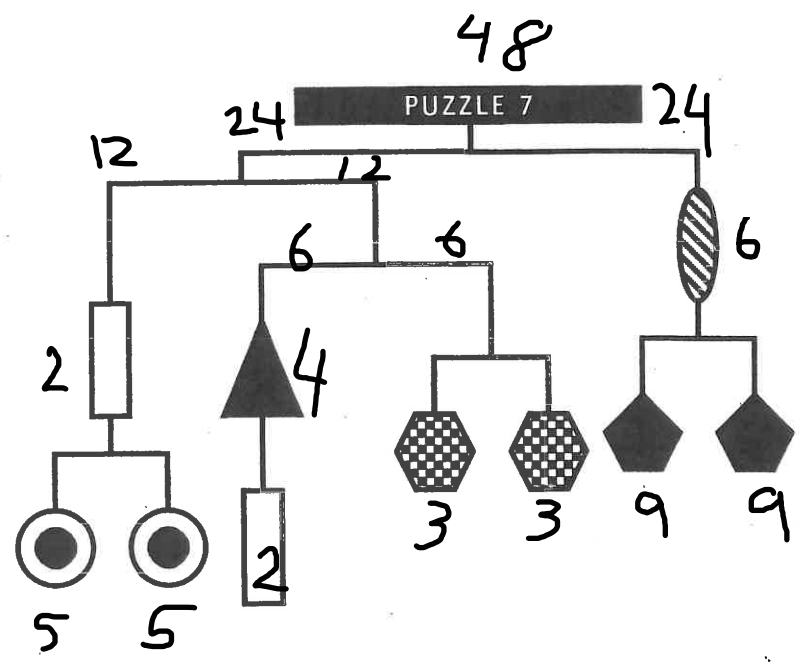


Discover the value of each of the shapes.  
The total weight is 64. Clue:

<

2 pts each

2	5
<del>4</del>	<del>4</del>



Discover the value of each of the shapes.  
The total weight is 48. Clues:

>   
 + < 9 or 10 or 11

Can't be 10 because the oval would be 4, which is already taken. So is the 2.